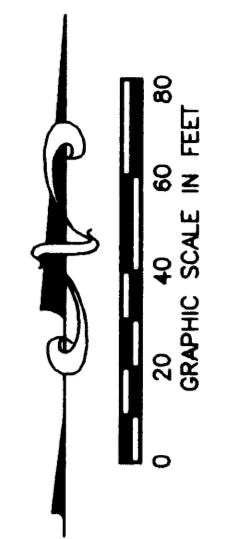


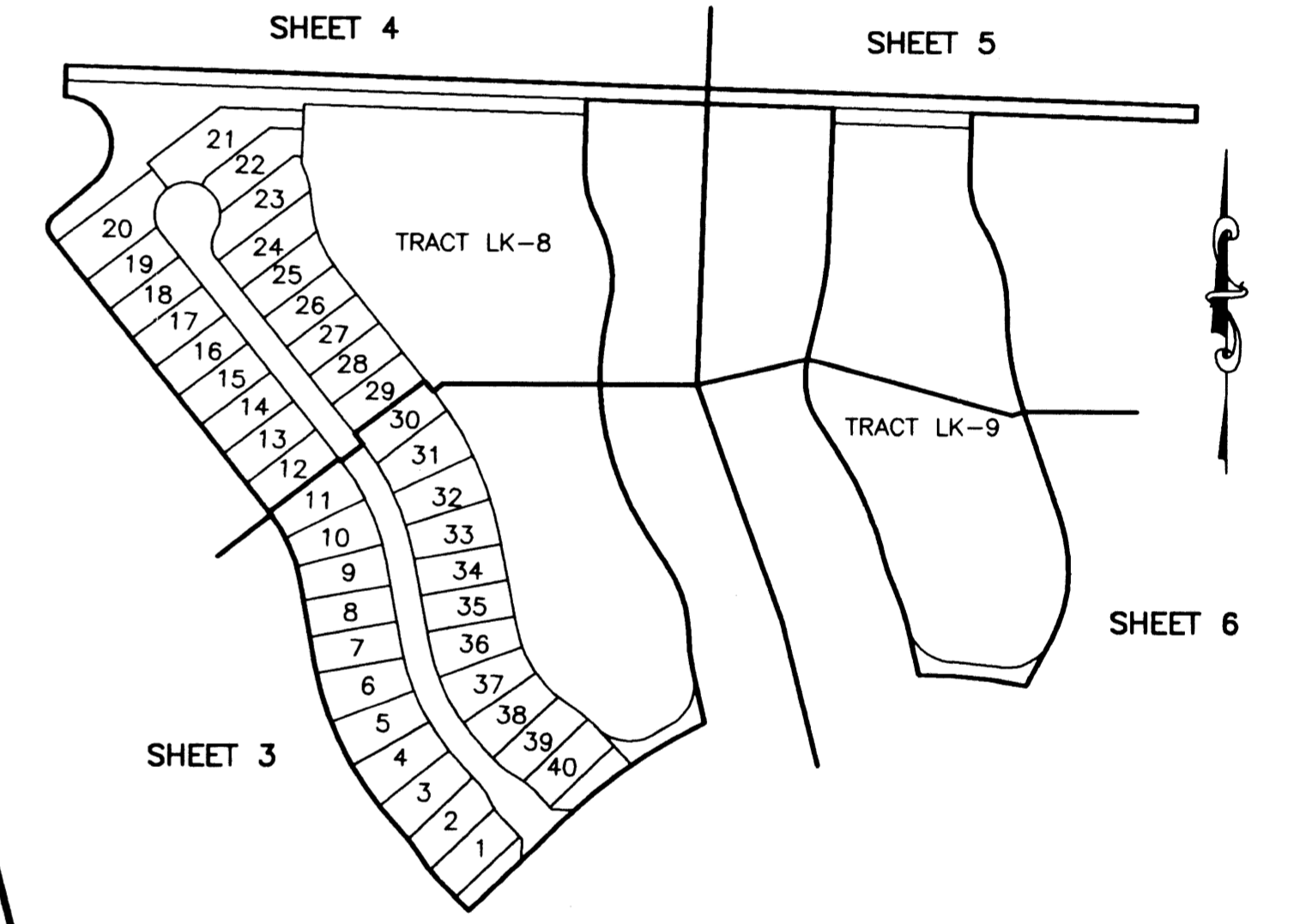
STATE OF FLORIDA
COUNTY OF PALM BEACH
THIS PLAT WAS FILED FOR
RECORD _____
THIS _____ DAY OF _____
AD, 2003 AND DULY RECORDED
IN PLAT BOOK _____ ON PAGES
_____ THROUGH _____
DOROTHY H. WILKEN, CLERK
BY: _____, D.C.



CIRCUIT COURT SEAL

MIRASOL PARCEL TWENTY-THREE

PART OF GOLF DIGEST P.C.D.
BEING IN SECTION 03, TOWNSHIP 42 SOUTH, RANGE 42 EAST,
CITY OF PALM BEACH GARDENS,
PALM BEACH COUNTY, FLORIDA
SHEET 3 OF 6



SHEET LOCATION MAP
NOT TO SCALE

LEGEND

Δ	CENTRAL (DELTA) ANGLE
CH	CHORD
BE	BUFFER EASEMENT
IEE	INGRESS-EGRESS EASEMENT
L	ARC LENGTH
NPBCID	NORTHERN PALM BEACH COUNTY IMPROVEMENT DISTRICT
PAE	PEDESTRIAN ACCESS EASEMENT
PB	PLAT BOOK
PG	PAGE
PCD	PLANNED COMMUNITY DEVELOPMENT
R	RADIUS
UE	UTILITY EASEMENT
WLE	WATER LINE EASEMENT
WMAE	WATER MANAGEMENT ACCESS EASEMENT
WME	WATER MANAGEMENT EASEMENT
WME	WATER MANAGEMENT MAINTENANCE EASEMENT
□	PERMANENT REFERENCE MONUMENT FOUND LB 048 (4" x 4" CONCRETE)
■	PERMANENT REFERENCE MONUMENT SET LB 048 (4" x 4" CONCRETE)
○	PERMANENT CONTROL POINT
○	SET LB 048
⊙	CENTERLINE
⊙	1/4 SECTION CORNER

THIS INSTRUMENT WAS PREPARED BY MARY HANNA CLODFELTER, P.S.M. IN THE OFFICES OF MOCK, ROOS & ASSOCIATES, INC., 5720 CORPORATE WAY, WEST PALM BEACH, FLORIDA 33407.

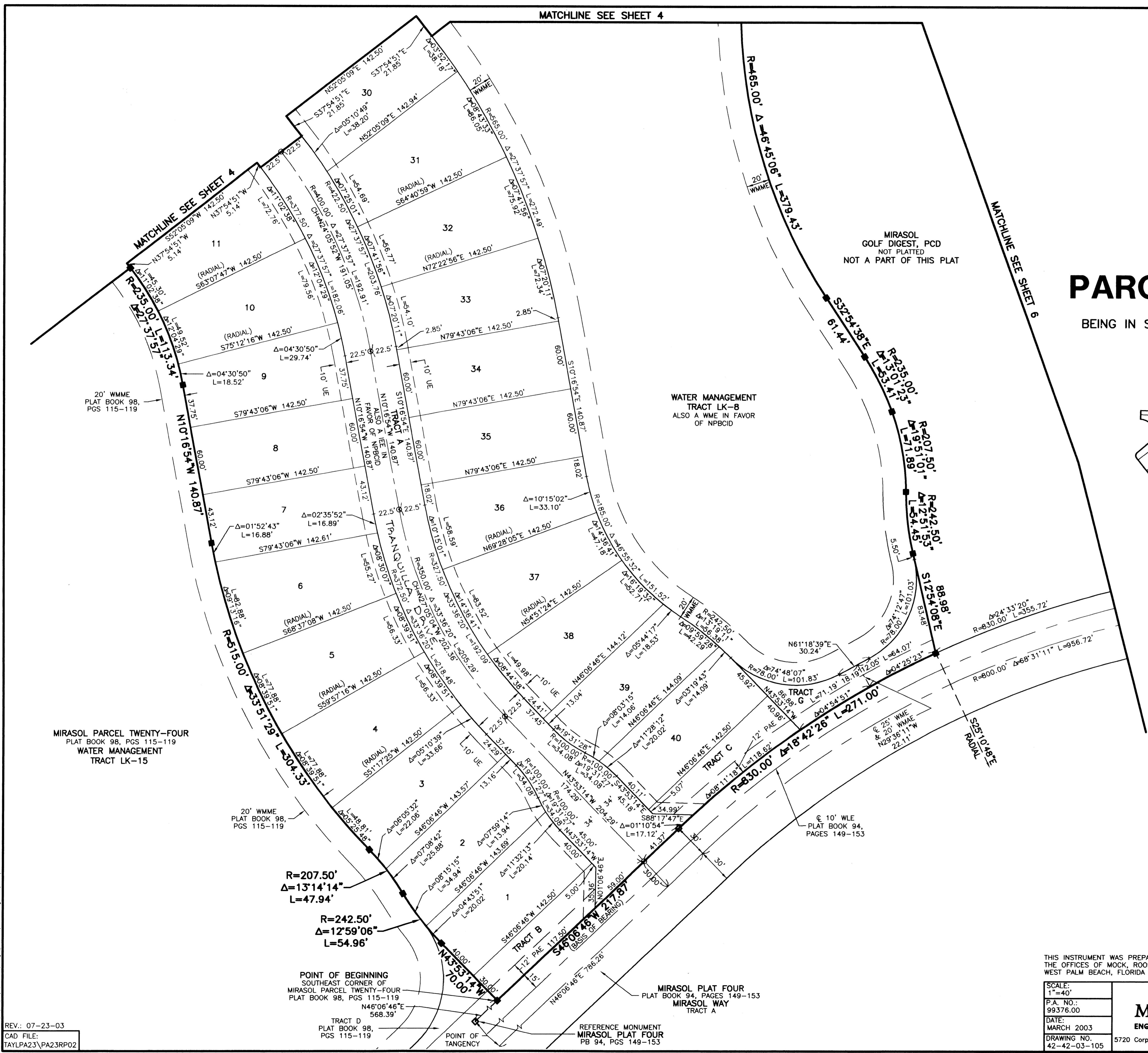
SCALE:	1"=40'
P.A. NO.:	99376.00
DATE:	MARCH 2003
DRAWING NO.:	42-42-03-105

FLORIDA L.B. NO. 48

MOCK • ROOS
ENGINEERS • SURVEYORS • PLANNERS

5720 Corporate Way, West Palm Beach, Florida 33407
(561) 683-3113, fax 478-7248

MIRASOL PARCEL TWENTY-THREE
PART OF GOLF DIGEST P.C.D.
BEING IN SECTION 03,
TOWNSHIP 42 SOUTH, RANGE 42 EAST,
CITY OF PALM BEACH GARDENS,
PALM BEACH COUNTY, FLORIDA



MIRASOL
GOLF DIGEST, PCD
NOT PLATTED
NOT A PART OF THIS PLAT

WATER MANAGEMENT
TRACT LK-8
ALSO A WME IN FAVOR
OF NPBCID

MIRASOL PARCEL TWENTY-FOUR
PLAT BOOK 98, PGS 115-119
WATER MANAGEMENT
TRACT LK-15

POINT OF BEGINNING
SOUTHEAST CORNER OF
MIRASOL PARCEL TWENTY-FOUR
PLAT BOOK 98, PGS 115-119
N46°06'46"E
568.39'

REFERENCE MONUMENT
MIRASOL PLAT FOUR
PB 94, PGS 149-153

MIRASOL PLAT FOUR
PLAT BOOK 94, PAGES 149-153
MIRASOL
TRACT A

S:\sv\l\sv\p023\dwg\pa23rp02.dwg 7/23/2003 2:35:46 PM EDT
REV.: 07-23-03
CAD FILE:
TAYLPA23\PA23RP02